

Date Description

1998 Stage Two

Sixty Wills Apartments Germonds Building 54-60 Willis Street Wellington

Drawn By: KLM
Checked By: KLM
Date: 14 NOVEMBER 1998
Scale: 1:100

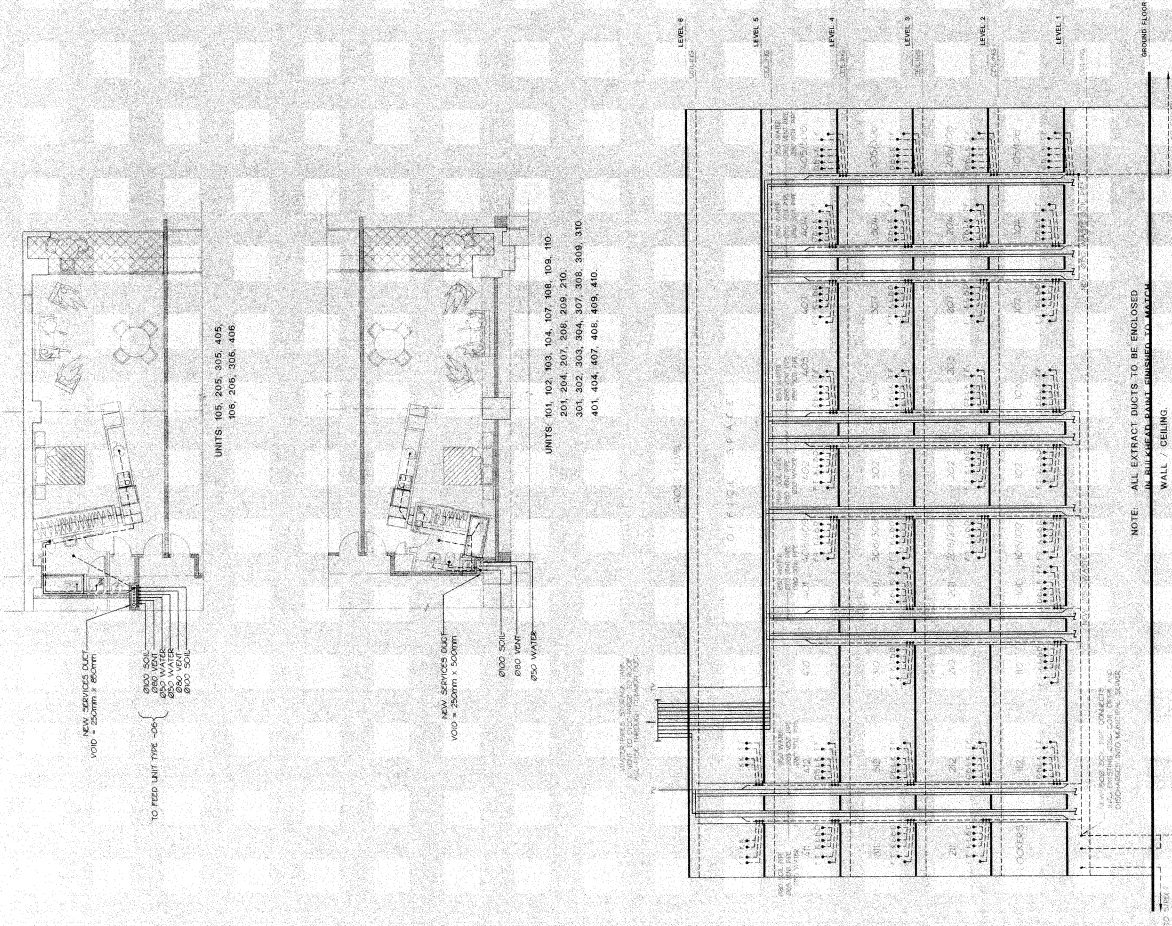
RECEIVED
23 NOV 1998

WILLIS STREET CONTACT

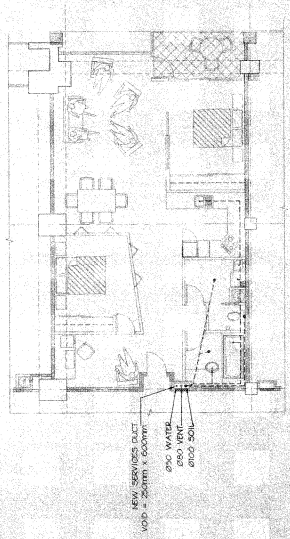
130-132, WELLIS STREET, WELLINGTON

It is intended that the drawings represent the final design of the work.
Any technical details are for guidance only.
The contractor/installer must ensure that the work is carried out in accordance with the relevant industry or safety standards or regulations of the Council.
Check dimensions on site. Use approved dimensions on each sheet.
Contractor must ensure that all work is carried out in accordance with the relevant industry or safety standards or regulations of the Council.
Contractor must ensure that all work is carried out in accordance with the relevant industry or safety standards or regulations of the Council.

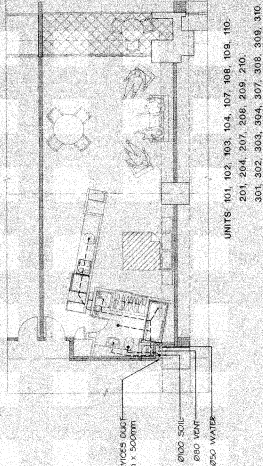
Job No: 1334
Sheet No: WT133



DRAINAGE SCHEMATIC LAYOUT
1:100



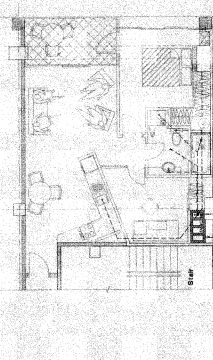
UNITS: 202, 203, 402, 403



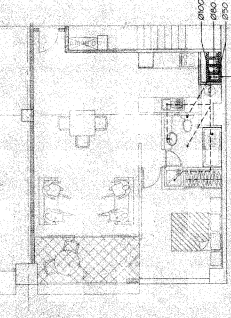
UNITS: 101, 102, 103, 104, 107, 108, 109, 110,
201, 204, 207, 208, 209, 210,
301, 302, 303, 304, 307, 308, 309, 310,
401, 404, 407, 408, 409, 410

LEGEND

- TOILET
- WATER
- WATER
- WATER
- WATER
- WATER
- WATER
- WATER



UNITS: 202, 302, 402



UNITS: 211, 311, 411